



Government of India
Ministry of Earth Sciences
India Meteorological Department



Press Release

Date: 23rd March, 2025

Time of Issue: 1330 hours IST

Subject: (i) Intense thunderstorms activity along with hailstorms & winds (40-60 Kmph) likely to continue over many parts of East India on today and decrease significantly thereafter.
(ii) Intense thunderstorms likely over many parts of South Peninsular India during 23rd to 24th with heavy rainfall at isolated places over Tamilnadu and Kerala on today, the 23rd March.
(iii) Gradual Rise in maximum temperature by 2-4°C over most parts of the country during next 3-4 days.

i. Realised weather during past 24 hours till 0830 hours IST of today, the 23rd March 2025 (Annexure I):

- ❖ **Heavy rainfall** reported at isolated places over Odisha and Kerala.
- ❖ **Hailstorms reported** at isolated locations over Uttarakhand, Jharkhand, Odisha, Rayalaseema, Telangana, South Interior Karnataka.
- ❖ **Squally/Gusty winds** prevailed at isolated locations over Uttar Pradesh, Gangetic West Bengal, Bihar, Jharkhand, Odisha, Assam & Meghalaya.
- ❖ **For more details of realised weather, kindly refer Annexure I**

Temperature:

- ❖ For temperature observations during past 24 hours till 0830 hours IST of today are provided in **Annexure II**

ii. Weather Systems, Forecast and Warnings (Annexure III & IV):

- ❖ A **cyclonic circulation** lies over central Uttar Pradesh and another over northeast Assam & neighbourhood in lower tropospheric levels. A north-south trough runs from west Vidarbha to south Tamil Nadu in lower tropospheric levels. There is wind confluence over east & adjoining east peninsular India in association with the anticyclonic circulation over Bay of Bengal at lower tropospheric levels. Under the influence of these systems:
 - ✓ **Scattered to Fairly widespread** light/moderate rainfall accompanied with **thunderstorm, lightning & gusty winds (speed 40-50 kmph)** likely over West Bengal, Sikkim, Bihar, Assam & Meghalaya, Tamilnadu Puducherry & Karaikal, Rayalaseema on 23rd March and reduction in intensity thereafter.
 - ✓ **Heavy rainfall** likely at isolated places over south Tamil Nadu, Kerala & Mahe on 23rd March and over Arunachal Pradesh on 28th & 29th March.
 - ✓ **Isolated hailstorms also likely over** West Bengal & Sikkim, Assam & Meghalaya and Rayalaseema on 23rd March.
 - ✓ **Scattered to Fairly widespread** light/moderate rainfall accompanied with **thunderstorm, lightning & gusty winds (speed 30-40 kmph)** likely over East Uttar Pradesh, Chhattisgarh, Jharkhand, Odisha, North Interior Karnataka on 23rd March; over Coastal Andhra Pradesh & Yanam, Telangana on 23rd & 24th March; over Rayalaseema on 24th March and over South Interior Karnataka during 23rd-26th March.

- ❖ A fresh Western Disturbance is likely to affect Western Himalayan Region from night of 24th March. Under its influence:
 - ✓ **Isolated to Fairly widespread** light/moderate rainfall accompanied with **thunderstorm, lightning** likely over Jammu-Kashmir-Ladakh-Gilgit-Baltistan-Muzaffarabad during 24th-28th; Himachal Pradesh during 24th-27th and over Uttarakhand on 26th & 27th March.
 - ✓ **Heavy rainfall** likely at isolated places over Jammu-Kashmir-Ladakh-Gilgit-Baltistan-Muzaffarabad on 26th March.

Temperature Forecast:

Forecast of temperature:

Maximum temperature:

- ❖ Gradual rise in maximum temperatures by 3-5°C likely over many places over Northwest India during next 4 days and no significant change thereafter.
- ❖ Gradual rise in maximum temperatures by 2-4°C likely over Central India and Interior Maharashtra during next 4-5 days.
- ❖ Gradual rise in maximum temperatures by 2-3°C likely over Gujarat during next 3 days and then fall by about 2-3°C thereafter.

Heat wave and Hot & Humid weather warning:

- ❖ **Hot & humid weather conditions** very likely to prevail in isolated pockets over coastal areas of Gujarat State during 23rd-25th March.

iv. Weather conditions and forecast over Delhi/NCR during 23rd March to 26th March. 2025 (Annexure V)

For more details, kindly refer National Weather Bulletin:

https://mausam.imd.gov.in/responsive/all_india_forecast_bulletin.php

For District wise warnings refer: <https://mausam.imd.gov.in/responsive/districtWiseWarningGIS.php>

Significant weather reported during past 24 hours till 0830 hours IST of today:

- ❖ **Light to moderate Rainfall/Snowfall** observed at isolated places over Uttarakhand.
- ❖ **Light/moderate Rainfall** observed at most places over Gangetic West Bengal; at many places over Sub-Himalayan West Bengal & Sikkim, Odisha, Arunachal Pradesh, South Interior Karnataka, Kerala & Mahe; at a few places over Jharkhand, Assam & Meghalaya, Rayalaseema, Lakshadweep; at isolated places over Uttar Pradesh, East Madhya Pradesh, Chhattisgarh, Bihar, Nagaland, Manipur, Mizoram & Tripura, Coastal Andhra Pradesh & Yanam, Telangana, North Interior Karnataka and Tamilnadu Puducherry & Karaikal.
- ❖ **Thunderstorm reported** at isolated locations over Uttarakhand, Uttar Pradesh, Assam & Meghalaya, West Bengal & Sikkim, Odisha, Jharkhand, Bihar, Telangana, Rayalaseema, Tamilnadu Puducherry & Karaikal, Kerala & Mahe, Lakshadweep.

Rainfall recorded (in cm):

- ❖ **Odisha:** Rangeilunda (Ganjam) 8, Chhatrapur (Ganjam) 7, Aska (Ganjam) 5, Kakatpur (Puri) 5, Buguda (Ganjam) 5, Gop (Puri) 5, Ganjam (Ganjam) 5, Sheragada (Ganjam) 4, Astaranga (Puri) 4, Khajuripada (Kandhamal) 4, Sohela (Bargarh) 4, Krishnaprasad (Puri) 4, Naktideul (Sambalpur) 4, Komna (Nawapara) 3, Odagaon (Nayagarh) 3, Derabis (Kendrapara) 3, Junagarh (Kalahandi) 3, Dharakote (Ganjam) 3, Bhuban (Dhenkanal) 3, Korei (Jajpur) 3, Rairangpur (Mayurbhanj) 3, Nayagarh (Nayagarh) 3, Cuttack (Cuttack) 3, Lanjigarh (Kalahandi) 3, Kodala (Ganjam) 3, Tihidi (Bhadrak) 3, Polsara (Ganjam) 3, Rairakhol (Sambalpur) 3, Bhandaripokhari (Bhadrak) 3,
- ❖ **Chhattisgarh:** Surajpur (dist Surajpur) 3,
- ❖ **Kerala & Mahe:** Cherthala (dist Alapuzha) 8, Udumbannoor(dist Idukki) 7, Thodupuzha (dist Idukki) 5, Chimoni (dist Thrissur) 5, Pampadumpara(dist Idukki) 4, Angadipuram (dist Malappuram) 4, Vellayani(dist Thiruvananthapuram) 4, Athirappalli(dist Thrissur) 4, Idukki (dist Idukki) 4, Kanjirappally (dist Kottayam) 3, Pattembi (dist Palakkad) 3, Thattathumala(dist Thiruvananthapuram) 3, Ambalavayal (dist Wynad) 3,

Hailstorm recorded:

- ❖ **Rayalaseema:** Sri Sathyasai
- ❖ **Jharkhand:** Ranchi;
- ❖ **Odisha:** Mayurbhanj, Baripada
- ❖ **South Interior Karnataka:** Kolar

- ❖ Maximum Temperatures were **markedly above normal (5.1°C or more)** at isolated places over Jammu-Kashmir-Ladakh-Gilgit-Baltistan-Muzaffarabad; **appreciably above normal (3.1°C to 5.0°C)** at isolated places over Himachal Pradesh; **above normal (1.6°C to 3.0°C)** at many places over Punjab; at a few places over Saurashtra & Kutch; at isolated places over Haryana-Chandigarh-Delhi, Rajasthan. These were **markedly below normal (-5.1°C or less)** at many places over Gangetic West Bengal; at isolated places over Odisha, Jharkhand, Chhattisgarh; **appreciably below normal (-3.1°C to -5.0°C)** at a few places over Sub-Himalayan West Bengal & Sikkim; at isolated places over Bihar, Assam & Meghalaya; below **normal (-3.0°C to -1.6°C)** at many places over Arunachal Pradesh and Nagaland, Manipur, Mizoram & Tripura; at a few places over East Madhya Pradesh, Telangana, Tamil Nadu, Puducherry & Karaikal; at isolated places over Madhya Pradesh, Madhya Maharashtra, Marathwada, Telangana, East Rajasthan, Nagaland, Manipur, Mizoram & Tripura and near normal over rest parts of the country. Yesterday, the highest **maximum temperature of 40.4°C** was reported at **Anantapur (Rayalaseema)** over the country (**Fig. 2**).
- ❖ Yesterday, the Maximum temperatures have shown **falling tendency** during past 24 hours by 2-5°C over some parts of Gangetic West Bengal, Odisha, Jharkhand and **by 1-4°C** over major parts of Sub-Himalayan West Bengal & Sikkim, Assam & Meghalaya, Uttarakhand, Uttar Pradesh, Chhattisgarh; **rising tendency by 2-5°C** over Bihar, Jammu, Kashmir, Ladakh and **by 1-2°C** over Rajasthan, Saurashtra & Kutch, Vidarbha, Madhya Pradesh and **no significant change** over the rest parts of the country.
- ❖ Yesterday, the Maximum temperatures were in the **range of 36-40°C** at many places over Interior Maharashtra, Rayalaseema, south Coastal Andhra Pradesh & Yanam, Gujarat state, southwest Rajasthan; **30-35°C** at most places over Tamil Nadu, Puducherry & Karaikal, Kerala & Mahe, Karnataka, remaining Rajasthan, Madhya Pradesh, Chhattisgarh, South Odisha, Uttar Pradesh, Punjab, Haryana, Lakshadweep and Andaman & Nicobar Islands; **25-30°C** over remaining parts of country. (**Fig.1**)

Fig. 1: Maximum Temperatures

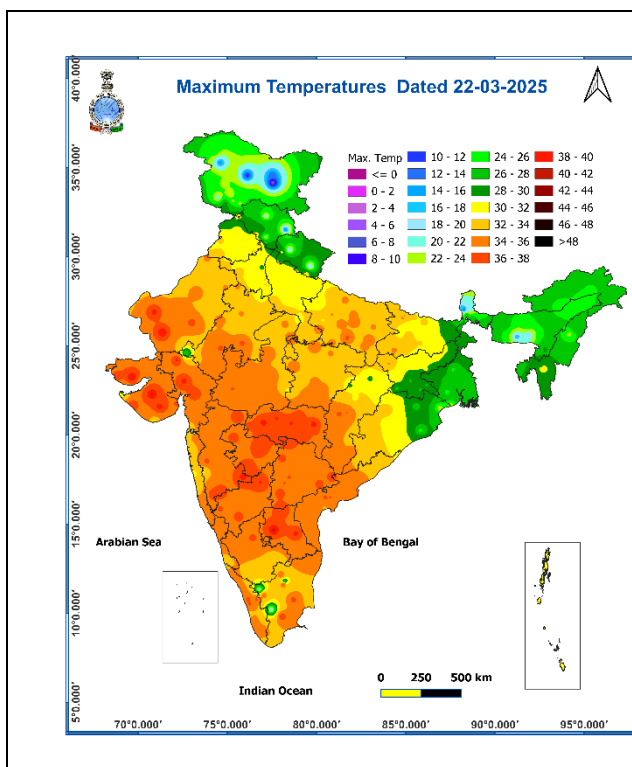
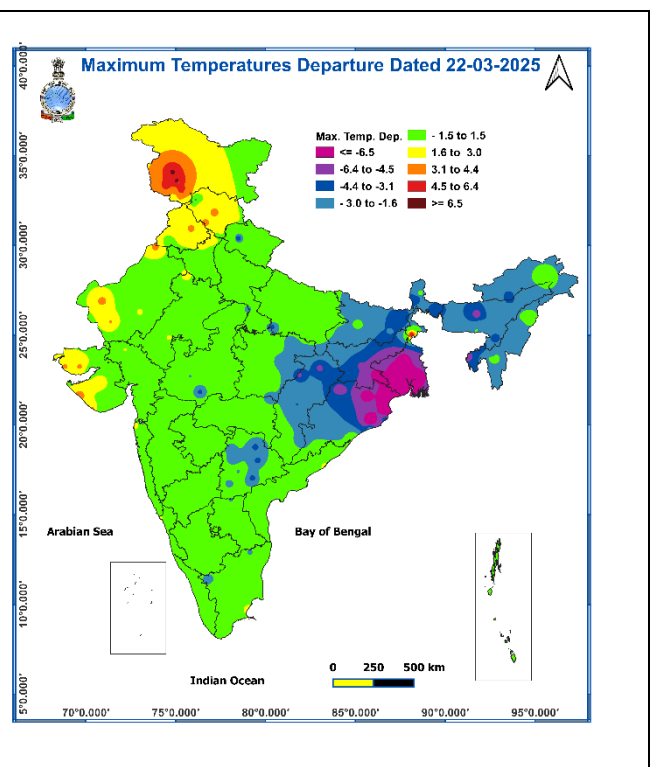
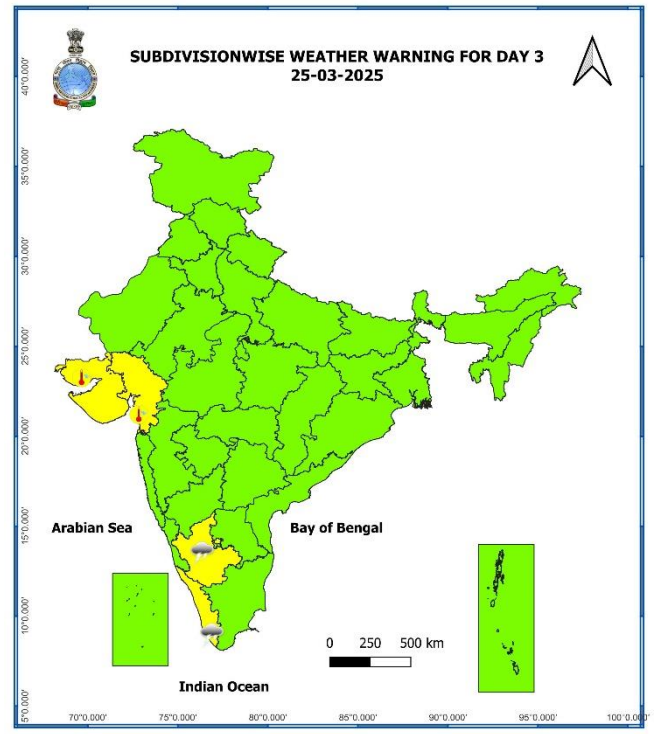
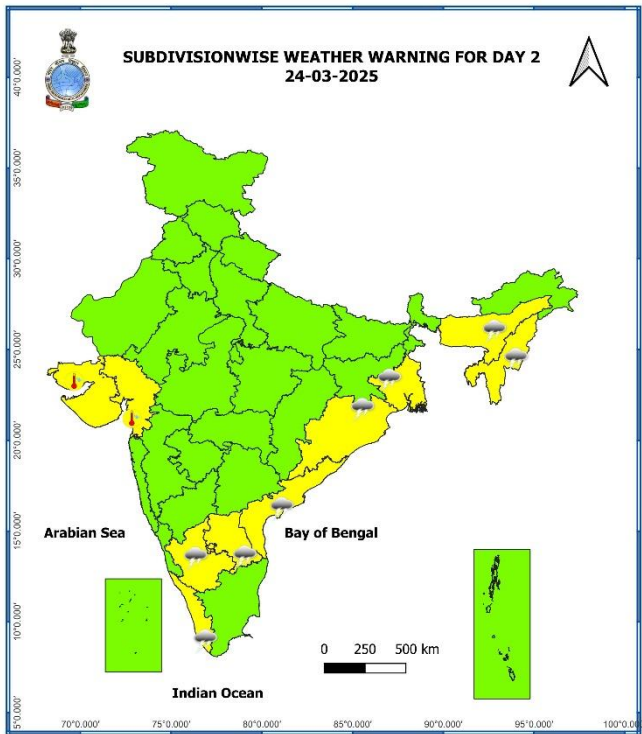
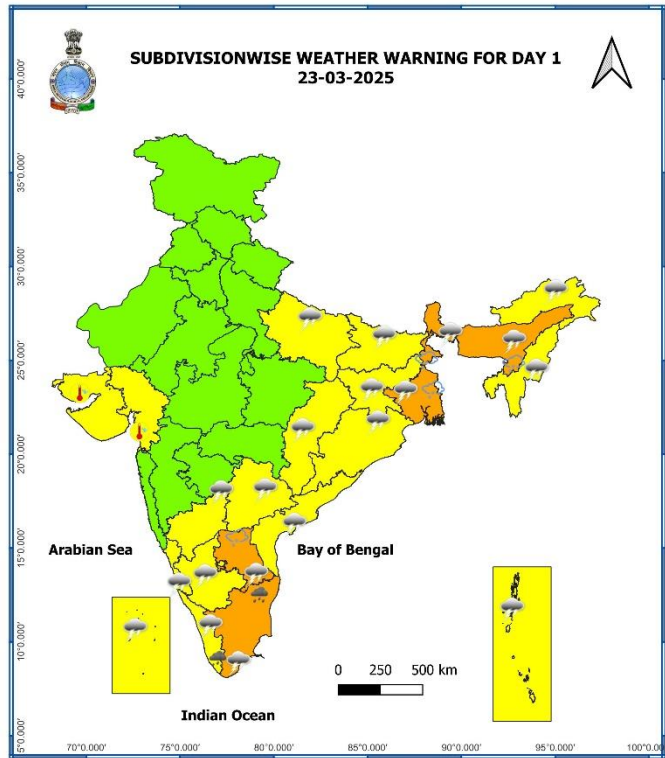


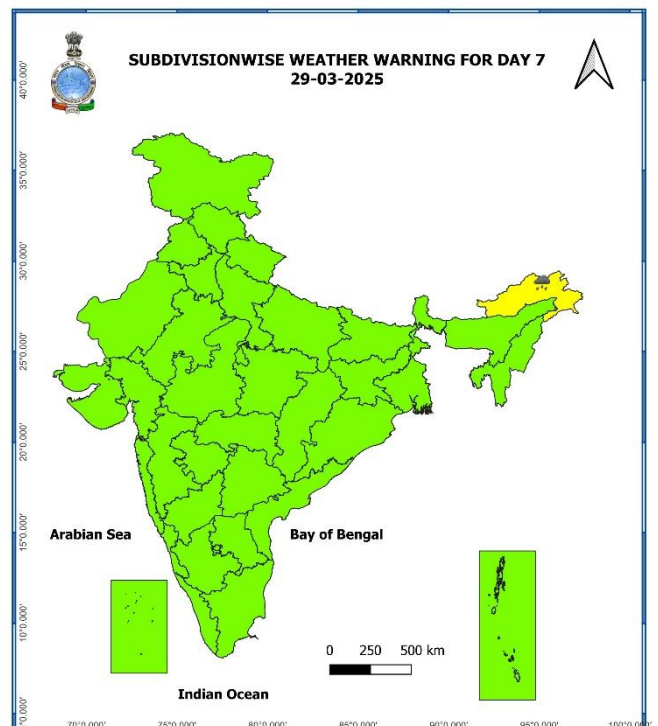
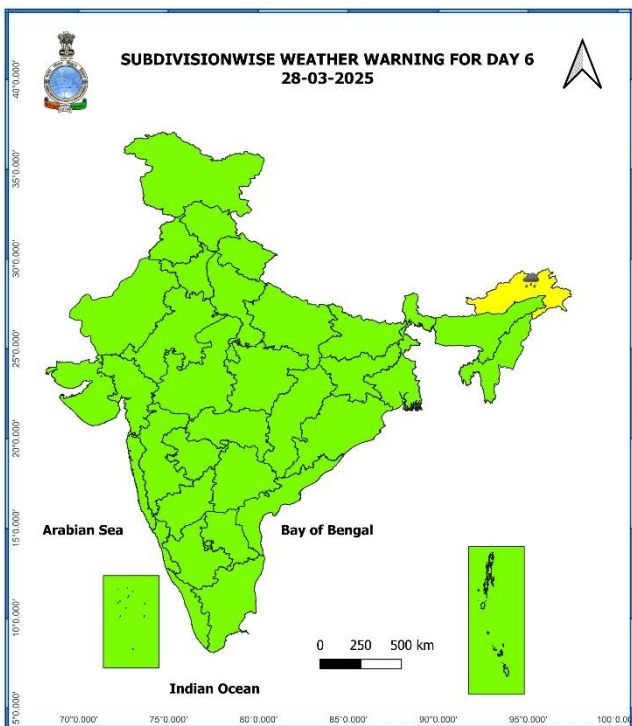
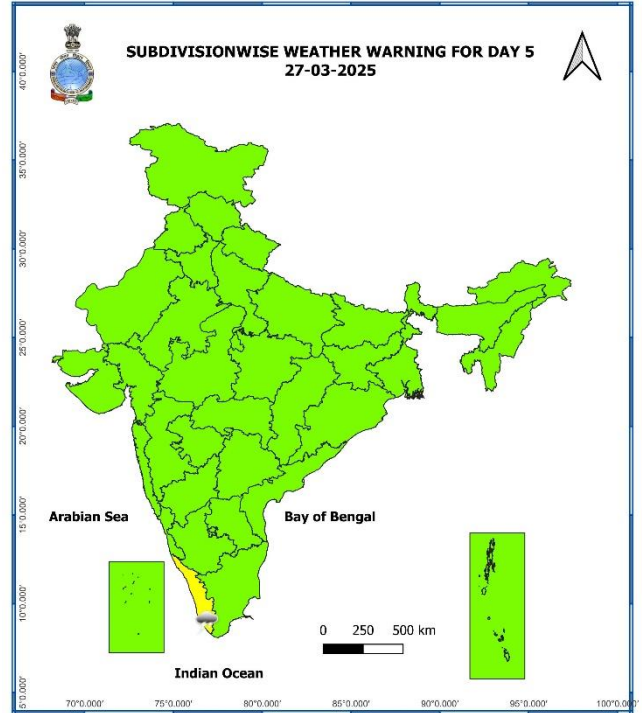
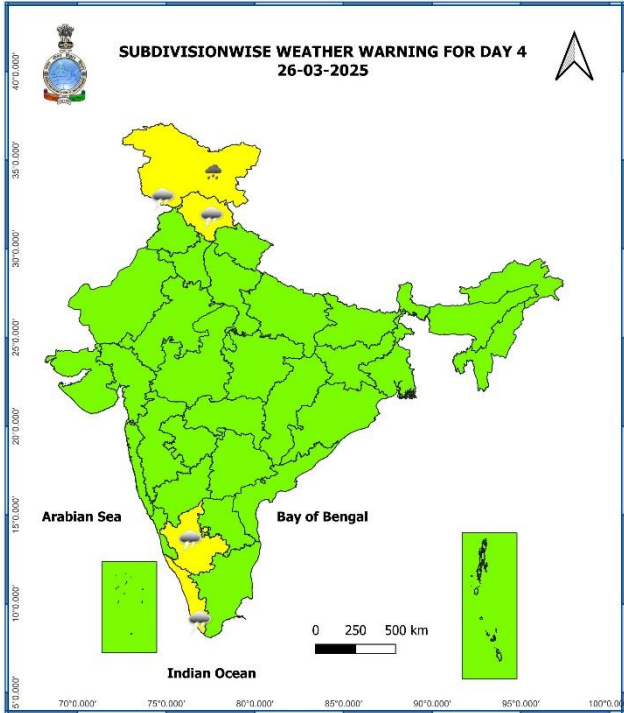
Fig. 2: Departure of Maximum Temperatures



7 Days Rainfall Forecast								
S. No.	Subdivision	23-Mar	24-Mar	25-Mar	26-Mar	27-Mar	28-Mar	29-Mar
		Day 1	Day 2	Day 3	Day 4	Day 5	Day 6	Day 7
1	ANDAMAN & NICOBAR ISLANDS	ISOL	ISOL	ISOL	DRY	DRY	ISOL	ISOL
2	ARUNACHAL PRADESH	SCT	ISOL	ISOL	ISOL	ISOL	FWS	FWS
3	ASSAM & MEGHALAYA	SCT	ISOL	DRY	DRY	ISOL	ISOL	ISOL
4	NAGALAND, MANIPUR, MIZORAM & TRIPURA	SCT	ISOL	DRY	DRY	DRY	ISOL	ISOL
5	SUB-HIMALAYAN WEST BENGAL & SIKKIM	SCT	DRY	DRY	DRY	DRY	ISOL	ISOL
6	GANGETIC WEST BENGAL	SCT	ISOL	DRY	DRY	DRY	DRY	DRY
7	ODISHA	SCT	ISOL	DRY	DRY	DRY	DRY	DRY
8	JHARKHAND	ISOL	DRY	DRY	DRY	DRY	DRY	DRY
9	BIHAR	ISOL	DRY	DRY	DRY	DRY	DRY	DRY
10	EAST UTTAR PRADESH	ISOL	DRY	DRY	DRY	DRY	DRY	DRY
11	WEST UTTAR PRADESH	DRY	DRY	DRY	DRY	DRY	DRY	DRY
12	UTTARAKHAND	DRY	DRY	DRY	ISOL	ISOL	DRY	DRY
13	HARYANA CHANDIGARH & DELHI	DRY	DRY	DRY	DRY	DRY	DRY	DRY
14	PUNJAB	DRY	DRY	DRY	DRY	DRY	DRY	DRY
15	HIMACHAL PRADESH	DRY	DRY	ISOL	SCT	SCT	DRY	DRY
16	JAMMU & KASHMIR AND LADAKH	DRY	ISOL	SCT	FWS	SCT	ISOL	DRY
17	WEST RAJASTHAN	DRY	DRY	DRY	DRY	DRY	DRY	DRY
18	EAST RAJASTHAN	DRY	DRY	DRY	DRY	DRY	DRY	DRY
19	WEST MADHYA PRADESH	DRY	DRY	DRY	DRY	DRY	DRY	DRY
20	EAST MADHYA PRADESH	DRY	DRY	DRY	DRY	DRY	DRY	DRY
21	GUJARAT REGION	DRY	DRY	DRY	DRY	DRY	DRY	DRY
22	SAURASHTRA & KUTCH	DRY	DRY	DRY	DRY	DRY	DRY	DRY
23	KONKAN & GOA	DRY	DRY	DRY	DRY	DRY	DRY	DRY
24	MADHYA MAHARASHTRA	ISOL	DRY	DRY	DRY	DRY	DRY	DRY
25	MARATHAWADA	DRY	DRY	DRY	DRY	DRY	DRY	DRY
26	VIDARBHA	DRY	DRY	DRY	DRY	DRY	DRY	DRY
27	CHHATTISGARH	ISOL	DRY	DRY	DRY	DRY	DRY	DRY
28	COASTAL ANDHRA PRADESH & YANAM	ISOL	ISOL	DRY	DRY	DRY	DRY	DRY
29	TELANGANA	ISOL	DRY	DRY	DRY	DRY	DRY	DRY
30	RAYALASEEMA	SCT	ISOL	DRY	DRY	DRY	DRY	DRY
31	TAMILNADU PUDUCHERRY & KARAIKAL	SCT	ISOL	ISOL	DRY	DRY	DRY	DRY
32	COASTAL KARNATAKA	DRY	DRY	ISOL	ISOL	DRY	DRY	DRY
33	NORTH INTERIOR KARNATAKA	ISOL	ISOL	DRY	DRY	DRY	DRY	DRY
34	SOUTH INTERIOR KARNATAKA	ISOL	ISOL	ISOL	ISOL	ISOL	DRY	ISOL
35	KERALA & MAHE	FWS	SCT	SCT	ISOL	ISOL	ISOL	ISOL
36	LAKSHADWEEP	SCT	SCT	ISOL	ISOL	ISOL	ISOL	ISOL

- As the lead period increases forecast accuracy decreases.





- Action may be taken based on **ORANGE AND RED COLOUR** warnings.
- Vulnerable regions likely urban and hilly areas action may be initiated for heavy rainfall warning.
- As the lead period increases forecast accuracy decreases.

Detailed district wise Multi Hazard weather warning for next five days available at <https://mausam.imd.gov.in/responsive/districtWiseWarningGIS.php>

Weather forecast over Delhi/NCR during 23rd Mar. to 26th Mar. 2025**Past Weather:**

There has been a fall in minimum and maximum temperatures upto 01°C over Delhi/NCR during the past 24 hours. The maximum and minimum temperatures over Delhi are in the range of 31 to 33°C and 14 to 17°C respectively. The minimum temperature was below normal upto 03°C and maximum temperature near normal at most places. Mainly clear sky conditions with predominant surface wind from the northwest direction with wind speeds less than 18 to 20 kmph prevailed during the past 24 hours. Mainly clear sky conditions with wind speed less than 08 kmph from the southwest direction prevailed over the region in the forenoon today.

Weather Forecast:

23.03.2025: Mainly clear sky. The maximum temperature over Delhi is likely to be in the range of 32 to 34°C. The predominant surface wind will likely be from the northwest direction with a wind speed of less than 10 kmph till evening. It would decrease thereafter becoming less than 06 kmph from the east direction during the night.

24.03.2025: Mainly clear sky. The maximum and minimum temperatures over Delhi are likely to be in the range of 33 to 35°C and 16 to 18°C respectively. The predominant surface wind will likely be from the west direction with a wind speed of 04-06 kmph during morning hours. The wind speed will gradually increase thereafter becoming 08-10 kmph from the northwest direction during the afternoon. It will decrease becoming less than 06 kmph from the northeast direction during evening and night.

25.03.2025: Mainly clear sky. The maximum and minimum temperatures over Delhi are likely to be in the range of 35 to 37°C and 16 to 18°C respectively. The predominant surface wind will likely be from the northeast direction with a wind speed of 04-06 kmph during morning hours. The wind speed will gradually increase becoming 10-12 kmph from the northwest direction in the afternoon. It will decrease becoming less than 08 kmph from the northeast direction during evening and night.

26.03.2025: Mainly clear sky. The maximum and minimum temperatures over Delhi are likely to be in the range of 36 to 38°C and 17 to 19°C respectively. The predominant surface wind will likely be from the northwest direction with a wind speed of 06-08 kmph during morning hours. The wind speed will gradually increase becoming 12-14 kmph from the northwest direction in the afternoon. It will decrease becoming less than 08 kmph from the northwest direction during evening and night.

Impact expected and action suggested due to thunderstorm accompanied with lightning/gusty winds & hailstorm over Rayalaseema, Assam & Meghalaya, East India on 23rd March 2025.

❖ **Impact expected:**

- ✓ Strong wind may damage plantation, horticulture and standing crops.
- ✓ Partial damage to vulnerable structures due to strong winds.
- ✓ Minor damage to kutchha houses/walls and huts.
- ✓ Loose objects may fly.

❖ **Action suggested:**

- ✓ Stay indoors, close windows & doors and avoid travel if possible.
- ✓ Take safe shelters; do not take shelter under trees.
- ✓ Do not lie on concrete floors and do not lean against concrete walls.
- ✓ Unplug electrical/ electronic appliances.
- ✓ Immediately get out of water bodies.
- ✓ Keep away from all the objects that conduct electricity.

Agromet advisories for likely impact of Heavy Rainfall / Hailstorm

- In **Assam & Meghalaya, Gangetic West Bengal** and **Rayalaseema**, keep the harvested produce in safer places or cover the produce with tarpaulin sheets in the fields to avoid the adverse impact of likely hailstorm. Use hail net and hail caps to prevent mechanical damage in orchards due to hailstorms.
- In **Odisha, Tamil Nadu** and **Kerala**, drain out excess water from standing crop and vegetable fields.
- Provide mechanical support to horticultural crops and staking to vegetables to avoid lodging.

Livestock

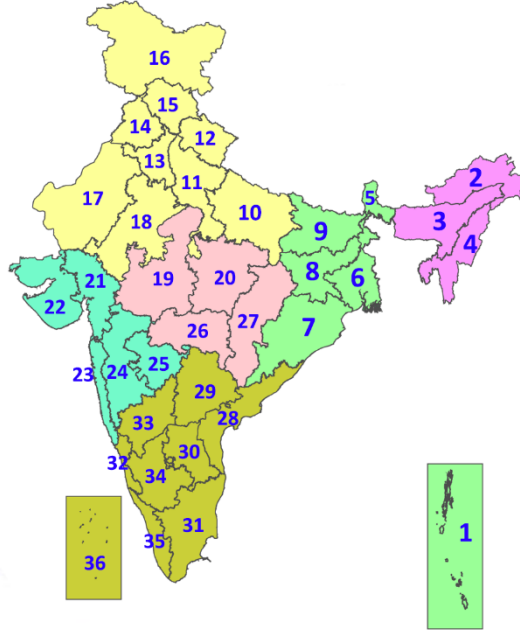
- Keep the animals inside the shed during heavy rainfall/hailstorm and provide them balanced feed.
- Store feed and fodder in a safe place to prevent spoilage.

Legends & abbreviations:

- ❖ **Heavy Rain:**64.5-115.5mm; **Very Heavy Rain:**115.6-204.4mm; **Extremely Heavy Rain:** >204.4mm.
- ❖ **Obsy:** Observatory; **AWS:** Automatic Weather Station; **ARG:** Automatic Rain Gauge; **dist:** District; **NH:** National Highway; **KVK:** Krishi Vigyan Kendra; **DVC:** Damodar Valley Corporation; **PTO:** Part Time Office, **Aero:** Aerodrome, **IAF:** Indian Air Force.
- ❖ **Region wise classification of meteorological Sub-Divisions:**
 - **Northwest India:** Western Himalayan Region (Jammu-Kashmir-Ladakh-Gilgit-Baltistan-Muzaffarabad, Himachal Pradesh and Uttarakhand); Punjab, Haryana-Chandigarh-Delhi; West Uttar Pradesh, East Uttar Pradesh, West Rajasthan and East Rajasthan.
 - **Central India:** West Madhya Pradesh, East Madhya Pradesh, Vidarbha and Chhattisgarh.
 - **East India:** Bihar, Jharkhand, Sub-Himalayan West Bengal & Sikkim; Gangetic West Bengal, Odisha and Andaman & Nicobar Islands.
 - **Northeast India:** Arunachal Pradesh, Assam & Meghalaya and Nagaland, Manipur, Mizoram & Tripura.
 - **West India:** Gujarat Region, Saurashtra & Kutch, Konkan & Goa, Madhya Maharashtra and Marathawada.
 - **South India:** Coastal Andhra Pradesh & Yanam, Telangana, Rayalaseema, Coastal Karnataka, North Interior Karnataka, South Interior Karnataka, Kerala & Mahe, Tamil Nadu, Puducherry & Karaikal and Lakshadweep.

LEGENDS

1. अंडमान और निकोबार द्वीपसमूह
2. अरुणाचल प्रदेश
3. असम और मेघालय
4. नागालैंड, मणिपुर, मिजोरम और त्रिपुरा
5. उप-हिमालयी पश्चिम बंगाल और सिक्किम
6. गंगीय पश्चिम बंगाल
7. ओडिशा
8. झारखंड
9. बिहार
10. पूर्वी उत्तर प्रदेश
11. पश्चिम उत्तर प्रदेश
12. उत्तराखंड
13. हरियाणा, चंडीगढ़ और दिल्ली
14. पंजाब
15. हिमाचल प्रदेश
16. जम्मू और कश्मीर और लद्दाख
17. पश्चिम राजस्थान
18. पूर्वी राजस्थान
19. पश्चिम मध्य प्रदेश
20. पूर्वी मध्य प्रदेश
21. गुजरात
22. सौराष्ट्र
23. कोंकण और गोवा
24. मध्य महाराष्ट्र
25. मराठवाड़ा
26. विदर्भ
27. छत्तीसगढ़
28. तटीय आंध्र प्रदेश और यनम
29. तेलंगाना
30. रायलसीमा
31. तमिलनाडु, पुडुचेरी और कराईकल
32. तटीय कर्नाटक
33. आंतरिक उत्तरी कर्नाटक
34. आंतरिक दक्षिणी कर्नाटक
35. केरल और माहे
36. लक्षद्वीप



1. Andaman & Nicobar Islands
2. Arunachal Pradesh
3. Assam & Meghalaya
4. Nagaland, Manipur, Mizoram & Tripura
5. Sub-Himalayan West Bengal & Sikkim
6. Gangetic West Bengal
7. Odisha
8. Jharkhand
9. Bihar
10. East Uttar Pradesh
11. West Uttar Pradesh
12. Uttarakhand
13. Haryana, Chandigarh & Delhi
14. Punjab
15. Himachal Pradesh
16. Jammu & Kashmir and Ladakh
17. West Rajasthan
18. East Rajasthan
19. West Madhya Pradesh
20. East Madhya Pradesh
21. Gujarat
22. Saurashtra
23. Konkan & Goa
24. Madhya Maharashtra
25. Marathwada
26. Vidarbha
27. Chhattisgarh
28. Coastal Andhra Pradesh & Yanam
29. Telangana
30. Rayalaseema
31. Tamilnadu, Puducherry & Karaikal
32. Coastal Karnataka
33. North Interior Karnataka
34. South Interior Karnataka
35. Kerala & Mahe
36. Lakshadweep

SPATIAL DISTRIBUTION (% of Stations reporting)

% Stations	Category	% Stations	Category
76-100	Widespread (WS/Most Places)	26-50	Scattered (SCT/A Few Places)
51-75	Fairly Widespread (FWS/Many Places)	1-25	Isolated (ISOL)

- | | | |
|----------------------|----------------------|--------------|
| Fog | Heavy Snow | Cold Wave |
| Heavy Rain | Dust Storm | Cold Day |
| Very Heavy Rain | Heat Wave | Ground Frost |
| Extremely Heavy Rain | Warm Night | |
| Thunder & Lightning | Hot Day | |
| Hailstorm | Hot & Humid | |
| Dust Raising Winds | Strong Surface Winds | |

COLOUR CODED WARNING

No Warning (No Action)
Watch (Be Aware)
Alert (Be Prepared To Take Action)
Warning (Take Action)

Probabilistic Forecast

Terms	Probability of Occurrence (%)
Unlikely	< 25
Likely	25 - 50
Very Likely	50 - 75
Most Likely	> 75

* Red colour warning does not mean "Red Alert", Red colour warning means "Take Action".
Forecast and Warning for any day is valid from 0830 hours IST of day till 0830 hours IST of next day.
For more details, kindly visit <https://mausam.imd.gov.in> or contact: 011-2434-4599
(Service to the Nation since 1875)

DEFINITION/CRITERIA

Rain/ Snow *	Heavy: 64.5 to 115.5 mm/cm * Very Heavy: 115.6 to 204.4 mm/cm * Extremely Heavy: > 204.4 mm/cm *
Heat Wave	When maximum temperature of a station reaches $\geq 40^\circ\text{C}$ for plains and $\geq 30^\circ\text{C}$ for hilly regions (a) Based on Departure from normal Heat Wave: Maximum Temperature Departure from normal 4.5°C to 6.4°C . Severe Heat Wave: Maximum Temperature Departure from normal $\geq 6.5^\circ\text{C}$ (b). Based on Actual maximum temperature Heat Wave: When actual maximum temperature $\geq 45^\circ\text{C}$. Severe Heat Wave: When actual maximum temperature $\geq 47^\circ\text{C}$ (c). Criteria for heat wave for coastal stations When maximum temperature departure is $> 4.5^\circ\text{C}$ from normal. Heat Wave may be described provided maximum temperature $\geq 37^\circ\text{C}$
Warm Night	When maximum temperature remains 40°C Warm Night: When minimum temperature departure 4.5°C to 6.4°C . Severe Warm Night: When minimum temperature departure $> 6.4^\circ\text{C}$.
Cold Wave	When minimum temperature of a station $\leq 10^\circ\text{C}$ for plains and $\leq 0^\circ\text{C}$ for hilly regions. (a). Based on departure Cold Wave: Minimum Temperature Departure from normal -4.5°C to -6.4°C . Severe Cold Wave: Minimum Temperature Departure from normal $\leq -6.5^\circ\text{C}$ (b) Based on actual Minimum Temperature (for Plains only) Cold Wave : When Minimum Temperature is $\leq 4.0^\circ\text{C}$ Severe Cold Wave: When Minimum Temperature is $\leq 2.0^\circ\text{C}$ (c) For Coastal Stations When Minimum Temperature departure is $\leq -4.5^\circ\text{C}$ & actual Minimum Temperature is $\leq 15^\circ\text{C}$
Cold Day	When minimum temperature of a station $\leq 10^\circ\text{C}$ for plains and $\leq 0^\circ\text{C}$ for hilly regions Based on departure Cold Day: Maximum Temperature Departure from normal -4.5°C to -6.4°C . Severe Cold Day: Maximum Temperature Departure from normal $\leq -6.5^\circ\text{C}$
Fog	Phenomenon of small droplets suspended in air and the horizontal visibility $< 1\text{km}$ Moderate Fog: When the visibility between 500-200 metres Dense Fog: when the visibility between 50- 200 metres Very Dense Fog: when the visibility < 50 metres
Thunderstorm	Sudden electrical discharges manifested by a flash of light (Lightning) and a sharp rumbling sound (thunder)
Dust/Sand Storm	An ensemble of particles of dust or sand energetically lifted to great heights by a strong and turbulent wind.
Frost	Ice deposits on ground Air temperature $\leq 4^\circ\text{C}$ (over Plains)
Squall	A strong wind that rises suddenly, lasts for atleast 1 minute. Moderate: Wind speed 52-61 kmph Severe: Wind speed 62-87 kmph Very Severe: Wind speed > 87 kmph
Sea State	Effect of various waves in the sea over specific area Rough to very rough: Wind speed 41-62 kmph (22-33 knots) & Wave height 2.5-6 metre High to very high: Wind speed 63-117 kmph (34-63 knots) & Wave height 6-14 metre Phenomenal: Wind speed > 117 kmph (> 63 knots) & Wave height > 14 metre
Cyclone	Cyclonic Storm: Wind speed 62-87 kmph (34-47 knots) Severe Cyclonic Storm: Wind speed 88-117 kmph (48-63 knots) Very Severe Cyclonic Storm: Wind speed 118-165 kmph (64 - 89 knots) Extremely Severe Cyclonic Storm: Wind speed 166-220 kmph (90 -119 knots) Super Cyclone Strom: Wind speed > 220 kmph (> 119 knots)

* Red colour warning does not mean "Red Alert", Red colour warning means "Take Action".
 Forecast and Warning for any day is valid from 0830 hours IST of day till 0830 hours IST of next day.
 For more details, kindly visit <https://mausam.imd.gov.in> or contact: 011-2434-4599
 (Service to the Nation since 1875)

Hot and Humid: When maximum temperatures remain 3°C above normal along with the above normal relative humidity.